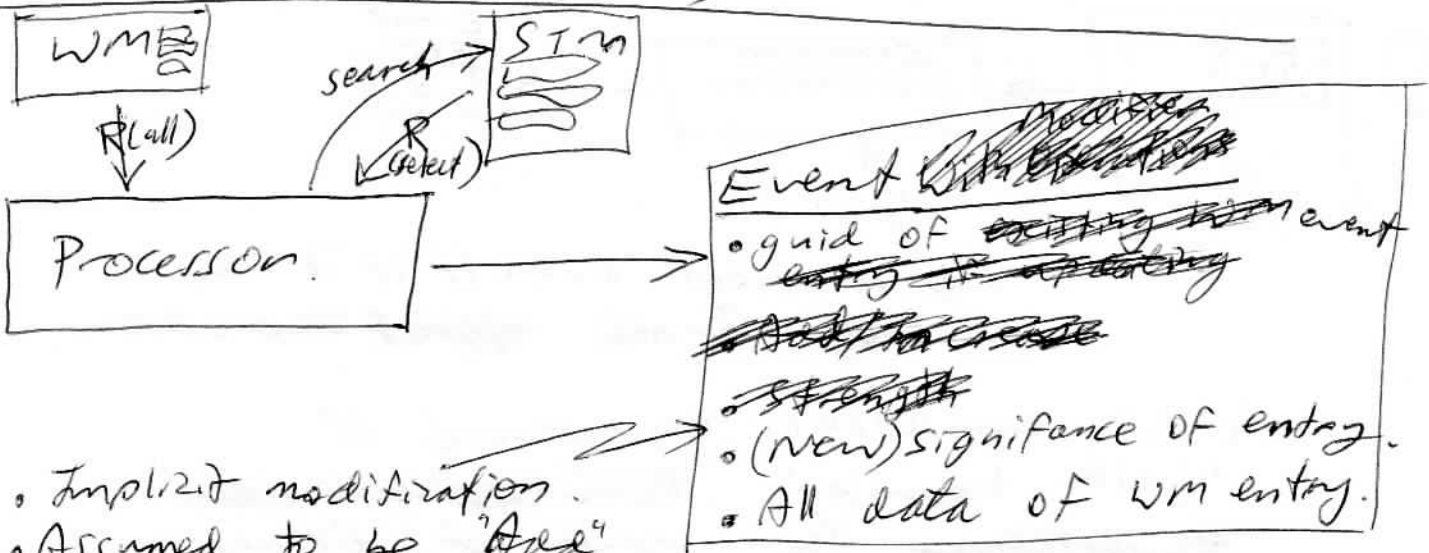


Processor (Non Interceptor)



- Implicit modification.
- Assumed to be "Add" or "Increase Significance" (no explicit decreases)

If accepted by Attenuation:

- Replaces existing entry if guid matches.

~~from~~

- within WME, moved into order according to new significances.

• within S.T.M., added to top of ~~B~~ list.
(Only replaces if same as entry currently on top.)

(pretty ineffectual with lots of "noise").

4mm(C) • Short Term Memory records it along with other meta-data: timestamps. Whereas WME doesn't hold that info → It only stores bare minimum needed for main processing.

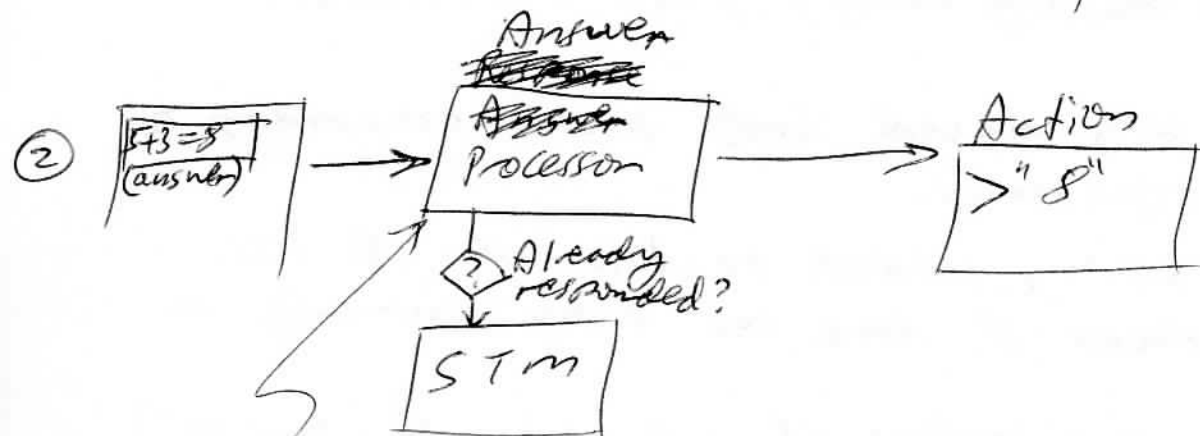
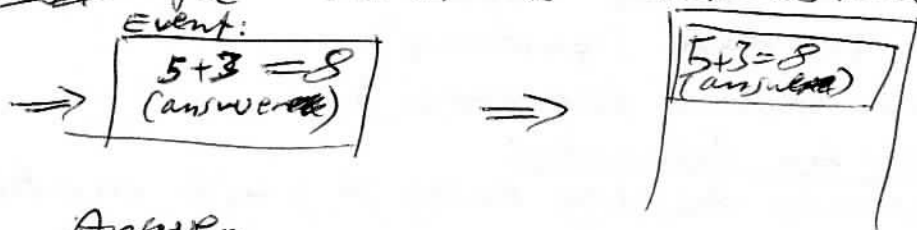
• S.T.M. stores clone of event, with unique guid.

3/ Processor - Calculator Example



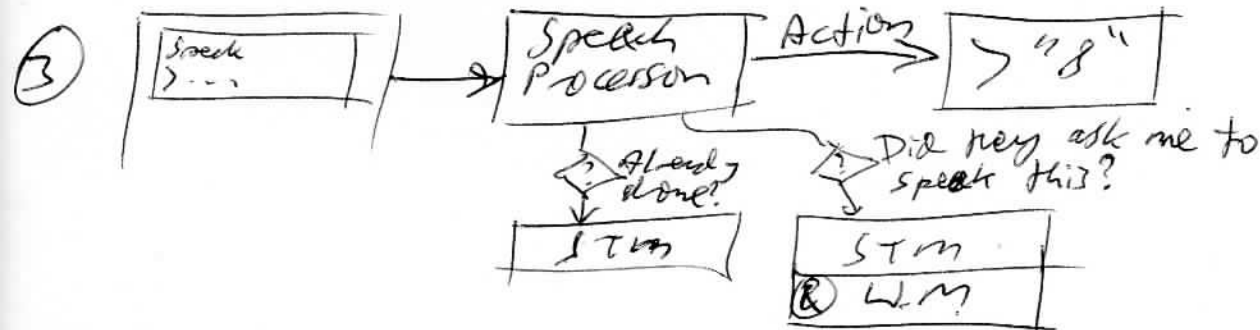
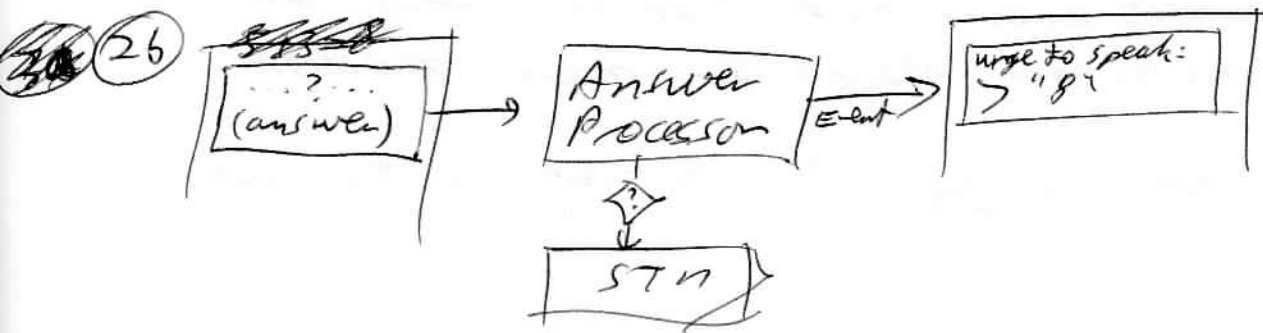
Only produces a result if it sees a fully formed ~~event~~ expression.

- Gives conscious experience of "just knowing" ~~how to calculate~~ the result of expressions.



Looks for any event ~~with~~ flagged as "answer".

⇒ However, choosing to answer, should be voluntary. So...



Events will subsequently fade from WM because the processors will refrain from outputting anything.